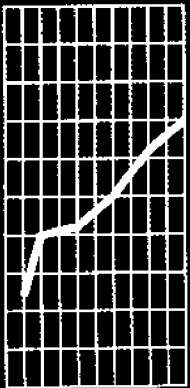




November 1997

EMBARGO: 11:30 AM (CANBERRA TIME) FRI 7 NOV 1997

# Tasmanian Statistical Indicators





**TASMANIAN STATISTICAL INDICATORS  
NOVEMBER 1997**

**Denis W. Rogers  
Regional Director, Tasmania**



## CONTENTS

	Page
MAIN FEATURES	v
TABLES	
<b>1</b> Population	1
<b>2</b> Births, deaths and marriages registered	1
<b>3</b> Labour force status	2
<b>4</b> Labour force status by region, males	3
<b>5</b> Labour force status by region, females	4
<b>6</b> Labour force status by region, persons	5
<b>7</b> Teenage labour market	6
<b>8</b> All employed persons by occupation	7
<b>9</b> Employed wage and salary earners, sector and industry	8
<b>10</b> Average hours worked	8
<b>11</b> Job vacancies	9
<b>12</b> Industrial disputes	9
<b>13</b> Average weekly earnings of employees	10
<b>14</b> Weekly award rates of pay indexes, full-time adult employees	10
<b>15</b> Summary of annual movements in wages and prices	11
<b>16</b> House price index numbers, Hobart	11
<b>17</b> Consumer price index, Hobart and eight capital cities combined	12
<b>18</b> Price index of materials used in building other than house building, Hobart	13, 14
<b>19</b> Production of selected commodities	15
<b>20</b> Livestock slaughtering: original	16
<b>21</b> Livestock slaughtering: seasonally adjusted and trend	16
<b>22</b> Meat production	17
<b>23</b> Principal mineral concentrates produced	17
<b>24</b> Sawmills and plywood mills, logs delivered and timber produced	18
<b>25</b> Chipping and grinding of wood	18
<b>26</b> Logs delivered for milling or chipping	19
<b>27</b> Building approvals	20

---

### INQUIRIES

- *for further information about statistics in this publication and the availability of related unpublished statistics, contact the Hobart office of the ABS on (03) 6222 5800.*
  - *for information about other ABS statistics and services, please refer to the back cover of this publication.*
-

<b>28</b>	<b>Secured housing commitments</b>	20
<b>29</b>	<b>Banking statistics</b>	21
<b>30</b>	<b>Private new capital expenditure by type of asset</b>	21
<b>31</b>	<b>Passenger arrivals and departures, Tasmania</b>	22
<b>32</b>	<b>Total passenger arrivals by air and sea, Tasmania</b>	22
<b>33</b>	<b>Accommodation statistics</b>	23
<b>34</b>	<b>Registrations of new motor vehicles</b>	24
<b>35</b>	<b>Turnover of retail establishments at current prices</b>	24
<b>36</b>	<b>Major Statistical Indicators—Australia and State comparisons</b>	25
	<b>EXPLANATORY NOTES</b>	26

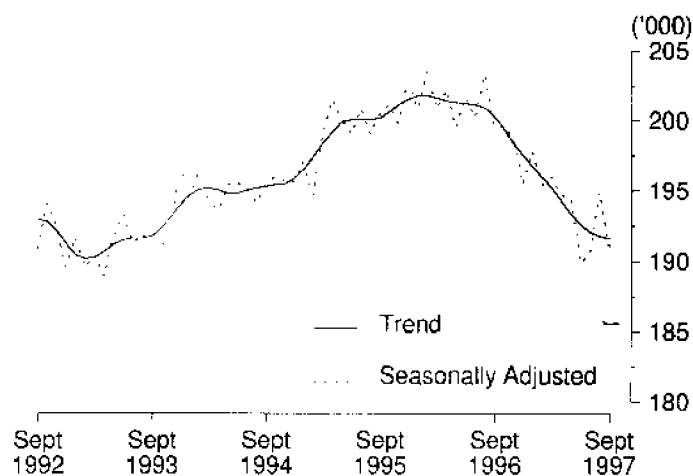
## MAIN FEATURES

### EMPLOYMENT

State comparisons  
trend estimates

The Australian and State *trend* series comparisons are given on page 25. There was a decrease of 4.3% in Tasmania's employment over the year to September 1997. The largest percentage increase in employment was in Western Australia (2.2%). Next followed Queensland (2.1%), South Australia (0.5%) and Victoria (0.2%). New South Wales had a decrease in employment of 0.3%.

### EMPLOYMENT, TASMANIA



Regional comparisons  
original terms

In the Hobart and Southern Statistical Divisions the estimate of employment in *original* terms in September 1997 was 94,500, and compares with 100,100 in September 1996. The estimate of employment in the Northern Statistical Division in September 1997 was 53,700 and compares with 58,700 in September 1996. The estimate of employment in the Mersey-Lyell Statistical Division was 43,500 in September 1997, and compares with 41,300 in September 1996. (See tables 3-8, pages 2-7.)

### THE LABOUR FORCE

Trend estimates

There were an estimated 216,000 persons (based on *trend* estimates) in the labour force in September 1997 and an estimated 369,800 civilian Tasmanians aged 15 years or more, yielding a labour force participation rate of 58.4%. This compares with 60.7% in September 1996.

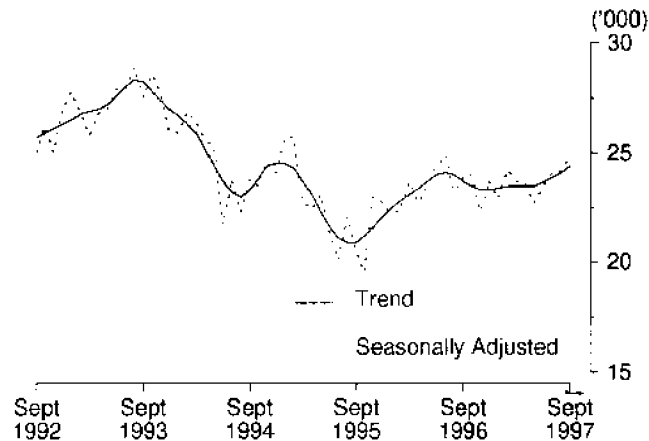
For males, the *trend* estimate of the participation rate was 69.3%, compared with 71.6% for September 1996. For females, the *trend* estimate of the participation rate was 47.8%, compared with 50.2% in September 1996.

(See table 3, page 2.)

## UNEMPLOYMENT

Trend estimates The *trend* estimate of the number of unemployed persons in Tasmania for September 1997 was 24,400. This compares with 23,700 for September 1996. The *trend* estimate of the unemployment rate of 11.3% in September 1997 compares with 10.6% in September 1996. (See tables 3-8, pages 2-7.)

### UNEMPLOYMENT, TASMANIA



## AWARD RATES OF PAY INDEXES

Original terms From June 1996 to June 1997, weekly award rates of pay indexes for Tasmania increased 1.1% for full-time adult female employees and 0.7% for full-time adult male employees, with a combined annual increase of 0.8%. For Australia, the figures were 1.9% for females and 1.2% for males, with a combined annual increase of 1.4%.

For full-time adult female employees in Tasmania, the largest industry increases over the same twelve-month period occurred in the Transport and storage industry (6.9%); and the Recreational, personal and other services industry (2.3%).

For the same period for full-time adult male employees in Tasmania, the largest industry increases occurred in the Recreation, personal and other services industry (1.9%); and the Transport and storage industry (1.6%).

The largest occupation increases over the same period for full-time adult female employees were for Para-professionals (2.6%); Tradespersons (1.2%); and Clerks (1.2%).

For full-time adult male employees the largest occupation increase over the period were for Clerks (0.9%); and Salespersons and personal service workers (0.9%).

(See table 15, page 11.)



## BUILDING MATERIALS PRICE INDEXES

Original terms The price index of materials used in house building in Hobart fell by 0.2% over the twelve months ending September 1997. All other capital cities recorded increases over the period, with Adelaide being the highest, at 2.3%. The weighted average of the capital cities increased by 1.5% over the same period.

For materials used in building other than house building, the price index for Hobart recorded an increase of 0.6% over the year ending September 1997. All of the other State capitals recorded increases, with Brisbane being the highest at 2.0%. The index for the weighted average of the eight capital cities increased by 1.2% over the same period.

Components in Hobart's price index of materials other than house building that recorded the largest increases over the year ending September 1997 were steel decking and cladding (up 5.9%), clay bricks (up 2.7%) and aluminium windows (up 2.3%). These rises were partly offset by falls in the prices of sand and aggregate (down 8.8%) and structural timber (down 5.1%).

(See tables 15 and 18, pages 11 and 13.)

## CONSUMER PRICE INDEX

Original terms The Consumer Price Index All Groups Index for Hobart fell by 0.6% in the September quarter of 1997, and by 0.4% for the year ending September. This compared with a fall of 0.4% for the weighted average of the eight capital cities for the September quarter, and a fall of 0.3% for the year.

The only capital city to record an increase in the index for the year ending September 1997 was Brisbane with an increase of 0.1%. Capital cities recording the largest decrease were Adelaide (-0.8%) and Perth (-0.7%).

Major contributors to the annual decrease at the national level were mortgage interest charges (-26.4%), the price of video and sound equipment (-6.3%) the price of records, cassettes, tapes (-5.5%), the price of fresh vegetables (-4.7%) and the price of motor vehicles (-4.4%). These were partly offset by increases in fresh potatoes (39.8%), tea, coffee (9.9%), education fees (6.4%), vehicle insurance (6.1%), and privately owned dwelling rents (2.9%).

(See tables 15 and 17, pages 11 and 12.)

## LIVESTOCK SLAUGHTERING

Trend estimates In August 1997, the *trend* estimate for the slaughtering of cattle and calves in Tasmania was 1.4% higher than in the previous month. The number of sheep and lambs slaughtered increased by 3.4%, and the number of pigs slaughtered remained virtually unchanged over the same period.

The *trend* estimate of the number of cattle and calves slaughtered in August 1997 was 24,600, which was 21.2% above the number slaughtered in August 1996.

The *trend* estimate for the slaughtering of sheep and lambs was 76,500 in August 1997, which was 35.4% above the number slaughtered in August 1996. This was the twelfth successive monthly increase in the number of sheep and lambs slaughtered in Tasmania, and 14.9% above the *trend* estimate for August 1995.

The *trend* estimate of 6,700 pigs slaughtered in August 1997 was 2.4% above the number slaughtered in August 1996, but 9.7% below the *trend* estimate of 7,400 slaughtered in August 1995.  
(See table 21, page 16.)

#### BUILDING APPROVALS

Original terms There were 136 dwelling units approved during August 1997 in Tasmania. This was 17.6% below the July 1997 figure of 165 and a decrease of 23.2% on the number recorded for August 1996 (177).

For the twelve months ended August 1997 there were 1,847 new dwelling units approved, 23.1% below the 2,402 units recorded for the twelve months ended August 1996.

The value of new residential building approved, at current prices, in August 1997 was \$11.0 million, 23.1% below the July 1997 figure and 27.0% below the August 1996 figure.

The value of all building approved, at current prices, in August 1997 was \$20.9 million, 18.9% below the July 1997 figure and 41.2% below the August 1996 figure.  
(See table 27, page 20.)

#### HOUSING FINANCE

Trend estimates The *trend* estimate for the number of new secured housing finance commitments entered into in Tasmania in August 1997 was 785 dwellings, a decrease of 0.9% on the previous month's figure of 792 and a fall of 27.9% when compared to the August 1996 figure of 1,088.

The value of new commitments has risen steadily since February 1997 to the August 1997 figure of \$58.7 million. However, when compared to the August 1996 value of \$71.2 million, it has fallen 17.6% over the twelve-month period.

Nationally, the total number of Australian dwelling commitments increased 0.1% from 39,895 dwellings in July 1997 to 39,949 in August, while the value of these commitments rose 1.0%, from \$4,367.6 million in July 1997 to \$4,412 million in August. When examining the annual change in the number of housing commitments, an increase of 1.2% is observed, from 39,457 in August 1996 to 39,949 in August 1997. The value of these commitments rose 12.7% from \$3,914.7 million in 1996 to \$4,412.0 million in 1997.  
(See table 28, page 20.)

#### NEW MOTOR VEHICLE REGISTRATIONS

Original terms There were 1,314 new motor vehicles (excluding motorcycles) registered in Tasmania during August 1997. This was 11.0% below the 1,476 registered in July 1997 and 1.6% below the figure for August 1996 (1,336).

Of the new motor vehicles (excluding motorcycles) registered in August 1997 in Tasmania, 270 were vehicles registered by vehicle rental businesses compared with 366 registered by vehicle rental businesses in July 1997 and 216 in August 1996.  
(See table 34, page 24.)

## RETAIL

Original terms In *original* terms, the estimate of retail turnover in Australia during August 1997 was \$10,727.2 million, 2.1% above the figure recorded in August 1996.

In *original* terms, the estimate of retail turnover in August 1997, for Tasmania, was \$255.3 million, 3.4% above the figure recorded for August 1996.

Trend estimates The *trend* estimate of retail turnover in Australia during August 1997 was \$11,087.2 million, 4.3% higher than the estimate recorded for August 1996.

The *trend* estimate of retail turnover in Tasmania recorded for August 1997, was \$266.6 million, 5.1% higher than the August 1996 figure.

The monthly *trend* estimate for turnover of retail and selected service establishments for Tasmania has shown an increase for the past twelve months.

(See table 35, page 24.)



# 1

## POPULATION: Original

Year or quarter	Estimated resident population at end of period	Natural increase <sup>1</sup>	Net estimated migration gain	Total population growth	Annual growth rate <sup>2</sup>
	'000	'000	'000	'000	%
<b>Year ended 30 June</b>					
1992	469.8	3.2	- 0.3	3.0	0.64
1993	471.6	3.1	- 1.5	1.8	0.38
1994	472.9	3.1	- 2.0	1.3	0.28
1995	473.7	2.9	- 2.4	0.8	0.18
1996 p	474.6	2.6	- 2.2	0.9	0.18
<b>Quarter</b>					
<b>1995</b>					
December	474.2	0.5	- 0.6	0.1	0.18
<b>1996</b>					
March	474.5	0.8	- 0.7	0.2	0.16
June	474.6	0.6	- 0.4	0.1	0.18
September p	474.7	0.6	0.5	0.1	0.11
December p	474.2	0.6	- 1.1	- 0.4	0.01
<b>1997</b>					
March p	473.8	0.7	- 1.1	- 0.5	- 0.14

<sup>1</sup> Excess of live births registered over deaths registered (based on usual State of residence).

<sup>2</sup> Percentage growth from same quarter in previous year.

(Source: Australian Demographic Statistics, ABS catalogue number 3101.0)

# 2

## BIRTHS, DEATHS AND MARRIAGES REGISTERED: Original

Year or quarter	Births		Deaths		Infant mortality <sup>1</sup>		Marriages	
	No.	Rate <sup>2</sup>	No.	Rate <sup>2</sup>	Deaths	Rate <sup>3</sup>	No.	Rate <sup>2</sup>
<b>Year ended 31 December</b>								
1992	6 956	14.8	3 722	7.9	43	6.2	3 081	6.5
1993	6 804	14.4	3 618	7.7	37	5.4	3 055	6.5
1994	6 836	14.4	3 909	8.3	46	6.7	2 887	6.1
1995	6 558	13.8	3 739	7.9	36	5.5	2 840	6.0
1996 p	6 419	13.5	3 884	8.2	29	4.5	2 654	5.6
<b>Quarter</b>								
<b>1995</b>								
December	1 446	..	906	..	9	6.2	799	..
<b>1996</b>								
March p	1 748	..	979	..	10	5.7	858	..
June p	1 524	..	969	..	6	3.9	789	..
September p	1 603	..	1 034	..	8	5.0	349	..
December p	1 544	..	902	..	3	1.9	658	..
<b>1997</b>								
March p	1 521	..	862	..	6	3.9	896	..

<sup>1</sup> Registered deaths of children under one year of age.

<sup>2</sup> Rate per 1,000 of estimated mean population.

<sup>3</sup> Rate per 1,000 live births.

(Source: Australian Demographic Statistics, ABS catalogue number 3101.0)

## 3

LABOUR FORCE STATUS<sup>1</sup>: Seasonally adjusted and trend

Month	Seasonally adjusted series				Trend Series			
	Employed	Unemployed	Unemployment rate	Participation rate	Employed	Unemployed	Unemployment rate	Participation rate
	'000	'000	%	%	'000	'000	%	%
MALES								
<b>1996</b>								
September	115.6	14.4	11.1	71.7	115.6	14.3	11.0	71.6
October	114.4	14.2	11.1	70.9	115.1	14.0	10.9	71.1
November	114.8	12.8	10.1	70.3	114.4	13.9	10.8	70.7
December	113.0	14.7	11.5	70.3	113.7	14.0	10.9	70.3
<b>1997</b>								
January	113.4	13.6	10.7	69.9	113.1	14.1	11.1	70.1
February	112.1	14.7	11.6	69.8	112.7	14.2	11.2	69.9
March	113.4	14.0	11.0	70.1	112.3	14.3	11.3	69.7
April	111.5	15.4	12.1	69.8	111.9	14.4	11.4	69.5
May	112.3	13.4	10.6	69.2	111.6	14.3	11.4	69.3
June	110.6	13.7	11.0	68.4	111.6	14.3	11.3	69.3
July	110.4	15.4	12.2	69.3	111.7	14.2	11.3	69.2
August	113.1	14.0	11.0	69.9	111.9	14.1	11.2	69.3
September	112.9	13.4	10.6	69.5	112.1	14.0	11.1	69.3
FEMALES								
<b>1996</b>								
September	84.0	9.5	10.1	49.8	84.7	9.5	10.1	50.2
October	85.3	9.8	10.3	50.6	84.4	9.5	10.1	50.0
November	84.0	9.4	10.1	49.8	84.1	9.4	10.1	49.8
December	82.6	9.0	9.8	48.8	83.8	9.4	10.1	49.6
<b>1997</b>								
January	84.5	9.3	9.9	49.9	83.6	9.3	10.0	49.5
February	83.3	9.5	10.3	49.4	83.3	9.3	10.0	49.3
March	82.6	9.7	10.5	49.2	82.9	9.2	10.0	49.0
April	83.3	8.3	9.1	48.7	82.4	9.1	10.0	48.7
May	82.3	9.3	10.2	48.8	81.7	9.2	10.1	48.4
June	79.4	9.8	11.0	47.5	81.1	9.4	10.4	48.1
July	80.1	8.7	9.8	47.3	80.4	9.7	10.8	48.0
August	81.8	10.2	11.0	48.9	79.9	10.1	11.2	47.9
September	78.2	11.4	12.7	47.7	79.4	10.4	11.6	47.8
TOTAL								
<b>1996</b>								
September	199.6	23.9	10.7	60.6	200.3	23.7	10.6	60.7
October	199.6	24.0	10.7	60.6	199.5	23.5	10.5	60.4
November	198.8	22.3	10.1	59.9	198.4	23.3	10.5	60.1
December	195.6	23.7	10.8	59.4	197.5	23.3	10.6	59.8
<b>1997</b>								
January	197.8	22.9	10.4	59.8	196.8	23.4	10.6	59.6
February	195.4	24.2	11.0	59.5	196.0	23.5	10.7	59.4
March	196.0	23.7	10.8	59.5	195.2	23.5	10.7	59.2
April	194.7	23.6	10.8	59.1	194.3	23.5	10.8	58.9
May	194.5	22.7	10.4	58.8	193.4	23.5	10.9	58.7
June	189.9	23.5	11.0	57.8	192.6	23.7	10.9	58.5
July	190.6	24.1	11.2	58.1	192.1	23.9	11.1	58.4
August	194.9	24.2	11.0	59.2	191.8	24.1	11.2	58.4
September	191.1	24.8	11.5	58.4	191.6	24.4	11.3	58.4

<sup>1</sup> For explanation of terms and concepts, refer to *Labour Force, Australia*, ABS catalogue number 6203.0. (Source: *Labour Force Australia*, ABS catalogue number 6203.0)

## 4

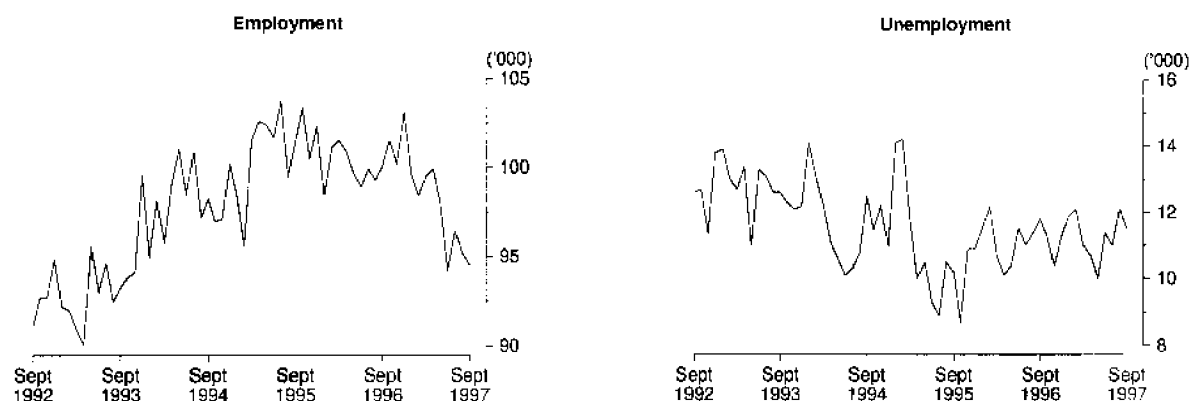
LABOUR FORCE STATUS BY REGION, MALES<sup>1, 2</sup>; Original

Month		Total employed '000	Total unemployed '000	Unemployment rate %	Participation rate %
HOBART AND SOUTHERN STATISTICAL DIVISIONS					
1994	September	54.3	7.9	12.6	70.6
1996	September	56.2	6.7	10.7	70.7
1997	July	53.9	6.9	11.3	67.3
	August	53.2	7.2	11.9	67.4
	September	53.5	6.3	10.6	68.7
NORTHERN STATISTICAL DIVISION					
1994	September	31.9	4.4	12.2	71.5
1996	September	34.5	3.9	10.2	74.5
1997	July	31.7	4.2	11.6	70.1
	August	32.1	4.2	11.5	69.9
	September	33.0	4.4	11.7	69.2
MERSEY-LYELL STATISTICAL DIVISION					
1994	September	26.6	3.3	10.9	72.6
1996	September	24.5	3.9	13.6	69.5
1997	July	25.4	3.7	12.8	72.5
	August	25.3	2.5	9.1	69.4
	September	25.9	2.7	9.6	70.4
TASMANIA					
1994	September	112.8	15.5	12.1	71.3
1996	September	115.2	14.5	11.2	71.5
1997	July	111.1	14.2	11.7	69.2
	August	110.6	13.9	11.2	68.5
	September	112.5	13.4	10.7	69.3

<sup>1</sup> For explanation of terms and concepts, refer to *Labour Force, Australia*, ABS catalogue number 6203.0.

<sup>2</sup> Data in this table are original series, i.e. they are not part of a seasonally adjusted or a trend series. Accordingly, care should be exercised when using these data. New monthly data from each quarter (March, June, September and December) are published two months after the quarter. (Source: Labour Force Estimates—microfiche tables.)

## Hobart and Southern Statistical Divisions—Persons: Original



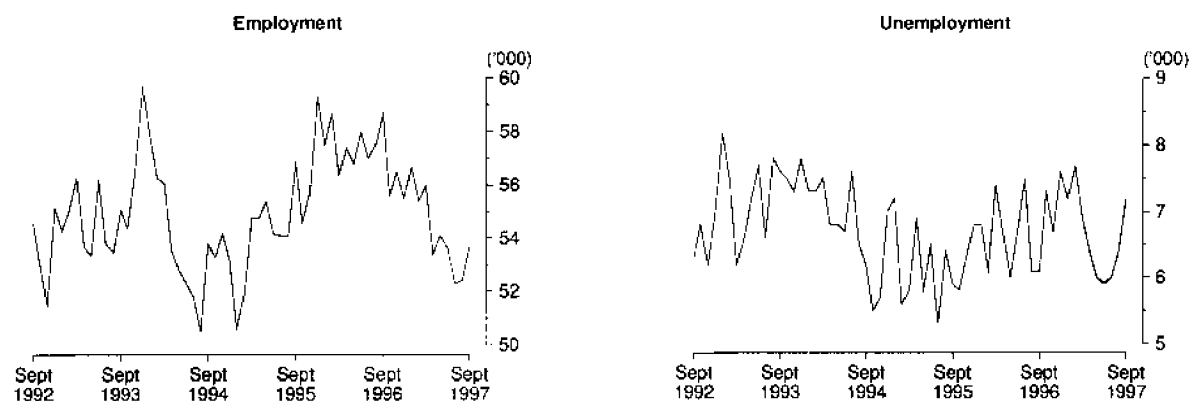
## 5

LABOUR FORCE STATUS BY REGION, FEMALES<sup>1, 2</sup>: **Original**

Month		Total employed '000	Total unemployed '000	Unemployment rate %	Participation rate %
<b>HOBART AND SOUTHERN STATISTICAL DIVISIONS</b>					
1994	September	43.9	4.6	9.5	52.0
1996	September	44.0	5.0	10.3	52.1
1997	July	42.5	4.2	8.9	49.7
	August	41.9	4.9	10.5	50.2
	September	41.0	5.2	11.3	51.2
<b>NORTHERN STATISTICAL DIVISION</b>					
1994	September	21.9	1.7	7.3	45.5
1996	September	24.2	2.2	8.3	50.3
1997	July	20.6	1.8	8.2	42.9
	August	20.3	2.2	9.9	43.6
	September	20.6	2.8	12.0	43.6
<b>MERSEY-LYELL STATISTICAL DIVISION</b>					
1994	September	17.4	2.5	12.4	48.3
1996	September	16.8	2.0	10.9	45.9
1997	July	17.4	2.6	13.2	47.9
	August	18.0	2.5	12.2	48.0
	September	17.6	3.1	15.1	47.1
<b>TASMANIA</b>					
1994	September	83.2	8.8	9.6	49.4
1996	September	84.9	9.3	9.8	50.2
1997	July	80.5	8.6	9.7	47.4
	August	80.3	9.7	10.7	47.9
	September	79.2	11.2	12.3	48.1

<sup>1</sup> For explanation of terms and concepts, refer to *Labour Force, Australia*, ABS catalogue number 6203.0.

<sup>2</sup> Data in this table are original series, i.e. they are not part of a seasonally adjusted or a trend series. Accordingly, care should be exercised when using these data. New monthly data from each quarter (March, June, September and December) are published two months after the quarter. (Source: Labour Force Estimates—microfiche tables.)

Northern Statistical Division—Persons: **Original**



# 6

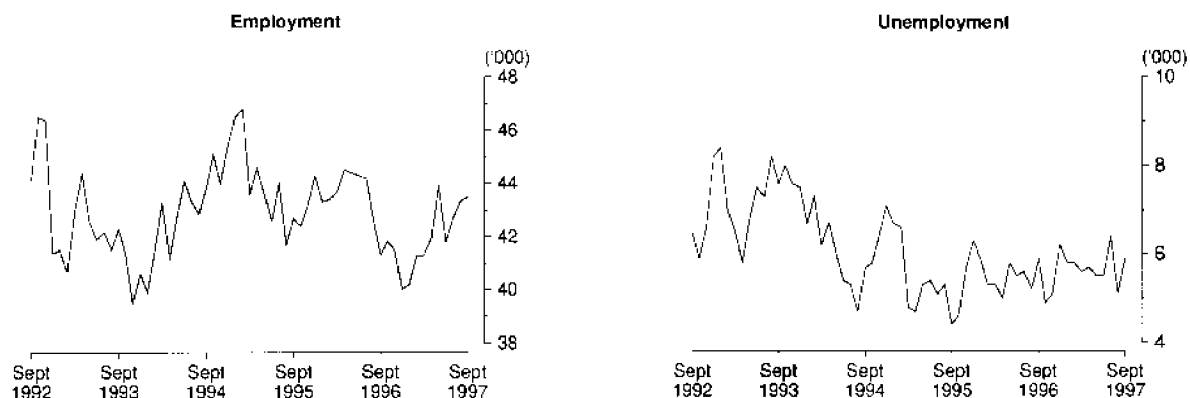
## LABOUR FORCE STATUS BY REGION, PERSONS<sup>1, 2</sup>: **Original**

Month		Total employed '000	Total unemployed '000	Unemployment rate %	Participation rate %
<b>HOBART AND SOUTHERN STATISTICAL DIVISIONS</b>					
1994	September	98.2	12.5	11.3	61.0
1996	September	100.1	11.8	10.5	61.1
1997	July	96.4	11.0	10.3	58.3
	August	95.2	12.1	11.3	58.6
	September	94.5	11.5	10.9	59.8
<b>NORTHERN STATISTICAL DIVISION</b>					
1994	September	53.8	6.2	10.3	58.4
1996	September	58.7	6.1	9.4	62.3
1997	July	52.3	6.0	10.3	56.4
	August	52.4	6.4	10.9	56.8
	September	53.7	7.2	11.8	56.5
<b>MERSEY-LYELL STATISTICAL DIVISION</b>					
1994	September	43.9	5.7	11.5	60.4
1996	September	41.3	5.9	12.5	57.6
1997	July	42.7	6.4	12.9	59.9
	August	43.3	5.1	10.5	58.3
	September	43.5	5.9	11.9	58.3
<b>TASMANIA</b>					
1994	September	196.0	24.3	11.0	60.2
1996	September	200.1	23.8	10.6	60.7
1997	July	191.5	23.4	10.9	58.1
	August	190.9	23.6	11.0	58.0
	September	191.7	24.6	11.4	58.5

<sup>1</sup> For explanation of terms and concepts, refer to *Labour Force, Australia*, ABS catalogue number 6203.0.

<sup>2</sup> Data in this table are original series, i.e. they are not part of a seasonally adjusted or a trend series. Accordingly, care should be exercised when using these data. New monthly data from each quarter (March, June, September and December) are published two months after the quarter. (Source: Labour Force Estimates—microfiche tables.)

### Mersey-Lyell Statistical Division—Persons: **Original**



Month	Employed		Unemployed		Labour force	Not in labour force	Civilian population aged 15-19	Unemployment rate	Unemployment population ratio	Participation rate	
	Full-time	Total	Looking for full-time work	Total							
	'000	'000	'000	'000	'000	'000	'000	%	%	%	
ATTENDING NEITHER SCHOOL NOR A TERTIARY INSTITUTION FULL TIME											
1994	September	6.3	8.7	3.0	3.0	11.7	1.2	12.9	25.8	23.4	90.8
1996	September	6.9	9.3	2.1	2.1	11.4	1.2	12.6	18.8	16.9	90.2
1997	July	5.3	8.5	3.2	3.3	11.8	2.1	13.9	27.9	23.6	84.7
	August	5.3	7.7	3.8	3.8	11.5	1.6	13.1	33.4	29.4	88.1
	September	5.5	8.1	3.2	3.2	11.3	1.5	12.8	28.1	24.8	88.2
ATTENDING SCHOOL OR A TERTIARY INSTITUTION FULL TIME											
1994	September	0.1	5.9	0.6	2.0	7.9	13.3	21.2	25.4	9.4	37.1
1996	September	0.2	6.8	0.3	1.7	8.5	13.0	21.5	20.1	7.9	39.4
1997	July	0.1	5.2	0.2	1.8	7.0	13.5	20.5	25.4	8.6	34.0
	August	—	4.9	0.2	1.9	6.7	14.6	21.4	27.5	8.7	31.4
	September	—	5.4	0.9	1.9	7.3	14.4	21.7	26.2	8.8	33.8
TOTAL											
1994	September	6.4	14.6	3.5	5.0	19.6	14.5	34.1	25.6	14.7	57.4
1996	September	7.0	16.0	2.3	3.8	19.9	14.3	34.2	19.3	11.3	58.2
1997	July	5.4	13.7	3.4	5.1	18.8	15.7	34.4	27.0	14.7	54.5
	August	5.3	12.5	4.0	5.7	18.2	16.2	34.4	31.2	16.5	53.0
	September	5.5	13.5	4.0	5.1	18.6	15.9	34.5	27.3	14.8	54.0

<sup>1</sup> Persons aged 15-19 years.

<sup>2</sup> For explanation of terms and concepts, refer to *Labour Force, Australia*, ABS catalogue number 6203.0. (Source: Labour Force Estimates—microfiche tables.)

## 8

ALL EMPLOYED PERSONS BY OCCUPATION<sup>1, 2</sup>: Original

Occupation	August 1996		August 1997		Proportion of total employed	
	Persons	Males	Females	Persons	August 1996	August 1997
	'000	'000	'000	'000	%	%
<b>Managers and administrators</b>	<b>12.1</b>	<b>7.5</b>	<b>2.4</b>	<b>9.9</b>	<b>6.1</b>	<b>5.2</b>
Generalist managers	1.5	1.4	0.2	1.5	0.8	0.8
Specialist managers	4.7	2.0	1.0	2.9	2.4	1.5
Farmers and farm managers	5.9	4.2	1.2	5.4	3.0	2.8
<b>Professionals</b>	<b>28.5</b>	<b>15.7</b>	<b>15.4</b>	<b>31.2</b>	<b>14.3</b>	<b>16.3</b>
Science, building and engineering professionals	2.6	2.8	0.4	3.3	1.3	1.7
Business and information professionals	5.8	5.1	1.4	6.5	2.9	3.4
Health professionals	6.7	1.4	5.3	6.7	3.4	3.5
Education professionals	7.5	2.6	6.7	9.3	3.8	4.9
Social, arts and miscellaneous professionals	6.0	3.8	1.6	5.4	2.8	2.8
<b>Associate professionals</b>	<b>17.4</b>	<b>12.0</b>	<b>5.4</b>	<b>17.4</b>	<b>8.7</b>	<b>9.1</b>
Science, engineering and related associate professionals	2.5	1.8	0.5	2.3	1.3	1.2
Business and administration associate professionals	3.3	2.3	0.8	3.1	1.7	1.6
Managing supervisors (sales and service)	8.5	5.3	2.5	7.8	4.3	4.1
Other associate professionals	3.0	2.7	1.6	4.3	1.5	2.3
<b>Tradespersons and related workers</b>	<b>27.2</b>	<b>25.6</b>	<b>2.5</b>	<b>28.1</b>	<b>13.6</b>	<b>14.7</b>
Mechanical and fabrication engineering tradespersons	5.5	6.2	0.0	6.2	2.8	3.2
Automotive tradespersons	2.9	3.1	0.0	3.1	1.5	1.6
Electrical and electronics tradespersons	4.5	4.1	0.0	4.1	2.3	2.1
Construction Tradespersons	5.9	5.5	0.0	5.5	3.0	2.9
Other tradespersons and related workers	8.3	6.6	2.5	9.1	4.2	4.8
<b>Advanced clerks and service workers</b>	<b>4.1</b>	<b>0.7</b>	<b>3.8</b>	<b>4.5</b>	<b>2.1</b>	<b>2.4</b>
Secretaries and personal assistants	1.7	0.0	2.0	2.0	0.9	1.0
Other advanced clerical and service workers	2.4	0.7	1.8	2.5	1.2	1.3
<b>Intermediate clerical, sales and service workers</b>	<b>39.9</b>	<b>11.7</b>	<b>27.1</b>	<b>38.8</b>	<b>20.0</b>	<b>20.3</b>
Intermediate clerical workers	23.6	7.4	17.2	24.7	11.8	12.9
Intermediate sales and related workers	3.6	1.7	0.7	2.4	1.8	1.3
Intermediate service workers	12.7	2.6	9.2	11.8	6.4	6.2
<b>Intermediate production and transport workers</b>	<b>21.5</b>	<b>17.1</b>	<b>1.4</b>	<b>18.5</b>	<b>10.8</b>	<b>9.7</b>
Intermediate plant operators	6.8	5.6	0.0	5.6	3.4	2.9
Intermediate machine operators	3.0	1.0	0.7	1.7	1.5	0.9
Road and rail transport drivers	6.5	6.7	0.3	7.0	3.3	3.5
Other intermediate production and transport workers	5.2	3.9	0.3	4.2	2.6	2.2
<b>Elementary clerical, sales and service workers</b>	<b>22.3</b>	<b>7.6</b>	<b>14.4</b>	<b>22.0</b>	<b>11.2</b>	<b>11.5</b>
Elementary clerks	3.1	1.3	1.4	2.7	1.6	1.4
Elementary sales workers	17.4	5.2	12.4	17.6	8.7	9.2
Elementary service workers	1.8	1.1	0.7	1.8	0.9	0.9
<b>Labourers and related workers</b>	<b>26.3</b>	<b>12.7</b>	<b>7.9</b>	<b>20.5</b>	<b>13.2</b>	<b>10.7</b>
Cleaners	5.7	1.4	4.3	5.8	2.9	3.0
Factory labourers	5.4	3.5	1.1	4.6	2.7	2.4
Other labourers and related workers	15.1	7.7	2.5	10.2	7.6	5.3
<b>Total employed</b>	<b>199.3</b>	<b>110.6</b>	<b>80.3</b>	<b>190.9</b>	<b>100.0</b>	<b>100.0</b>

<sup>1</sup> From August 1997, revisions to the Australian Standard Classification of Occupations (ASCO) have resulted in changes to this table.

<sup>2</sup> For explanation of terms and concepts, refer to *Labour Force, Australia*, ABS catalogue number 6203.0.

(Source: Labour Force Estimates—unpublished data.)

## 9

EMPLOYED WAGE AND SALARY EARNERS, SECTOR AND INDUSTRY<sup>1</sup>: Original

Industry	Employees, May 1997			Percentage distribution	
	Private No. ('000)	Public No. ('000)	Private and public No. ('000)	May 1995	May 1997
Agriculture, forestry, & fishing	n.a.	0.6	0.6	n.a.	0.4
Mining	2.2	—	2.2	1.6	1.3
Manufacturing	23.1	0.1	23.2	14.5	14.0
Electricity, gas & water, construction	6.4	2.4	8.8	6.3	5.3
Wholesale & retail trade	28.7	—	28.7	18.6	17.3
Accommodation, cafes & restaurants	11.6	—	11.6	6.7	7.0
Transport & storage	5.8	1.1	6.9	3.7	4.1
Communication services	0.5	2.2	2.7	1.5	1.6
Finance, insurance, property & business services	16.9	0.9	17.8	9.5	10.7
Education	3.7	14.8	18.4	11.2	11.1
Government administration and defence	—	9.3	9.3	6.9	5.6
Health and community services	14.0	9.4	23.4	14.3	14.1
Cultural, recreational, personal and other services	9.7	3.1	12.8	4.7	7.7
<b>Total all industries</b>	<b>122.5</b>	<b>43.8</b>	<b>166.3</b>	<b>100.0</b>	<b>100.0</b>

<sup>1</sup> For explanation of terms and concepts, refer to *Employed Wage and Salary Earners, Australia*, catalogue number 6248.0.  
(Source: *Employed Wage and Salary Earners*, ABS catalogue number 6248.0.)

## 10

## AVERAGE HOURS WORKED: Original

Month	Average weekly total hours worked, all employed persons <sup>1</sup>			Average weekly overtime hours <sup>2</sup>		Percentage of employees working overtime
	Males	Females	Persons	Per employee	Per employee working overtime	
<b>1994</b>						
August	39.4	26.9	34.1	1.0	6.5	15.6
<b>1996</b>						
August	38.8	27.2	33.9	0.8	5.4	14.4
November	38.7	26.8	33.6	0.8	6.2	12.7
<b>1997</b>						
February	38.0	26.2	33.1	0.9	6.6	13.6
May	39.4	27.8	34.4	0.8	5.9	13.3
August	38.4	26.8	33.5	0.7	6.5	11.0

<sup>1</sup> For explanation of terms and concepts, refer to *Labour Force, Australia*, ABS catalogue number 6203.0.

<sup>2</sup> For explanation of terms and concepts, refer to *Job Vacancies and Overtime, Australia*, ABS catalogue number 6354.0.

# 11

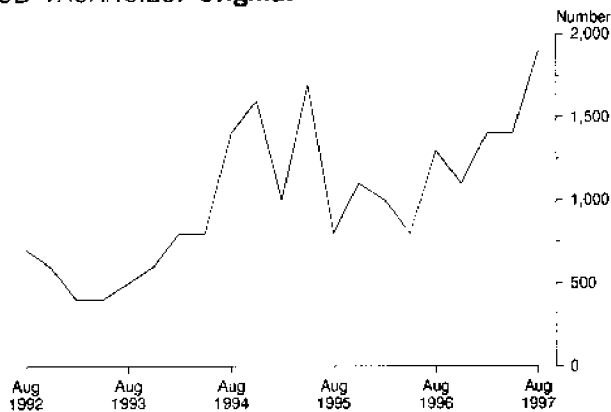
## JOB VACANCIES<sup>1</sup>: Original

Period	Number	Rate <sup>2</sup> %
<b>1994</b>		
August	1 400	0.9
<b>1996</b>		
August	1 300	0.8
November	1 100	0.7
<b>1997</b>		
February	1 400	1.0
May	1 400	1.0
August	1 900	1.4

<sup>1</sup> For explanation of terms and concepts refer to *Job Vacancies and Overtime, Australia*, catalogue number 6354.0.

<sup>2</sup> Job vacancies are expressed as a percentage of the number of job vacancies divided by the number of employees plus job vacancies.

### JOB VACANCIES: Original



# 12

## INDUSTRIAL DISPUTES<sup>1</sup>: Original

Month	Working days lost '000	Twelve months ending	Working days lost per thousand employees
<b>1996</b>		<b>1996</b>	
August	5.2	August	70
September	1.3	September	77
October	0.1	October	77
November	0.3	November	79
December	0.1	December	78
<b>1997</b>		<b>1997</b>	
January	0.0	January	73
February	0.0	February	73
March	0.0	March	73
April	0.0	April	73
May	1.4	May	81
June	0.0	June	79
July	3.7	July	75

### Twelve months ended 1997

July 12.2

<sup>1</sup> For explanation of terms and concepts, refer to *Industrial Disputes, Australia*, ABS catalogue number 6321.0.

# 13

## AVERAGE WEEKLY EARNINGS OF EMPLOYEES<sup>1</sup>: Original and trend

Quarter	Survey reference period	Full-time adult males		All males	Full-time adult females		All females	Full-time adult persons		All employees
		Weekly ordinary time earnings	Weekly total earnings	Weekly total earnings	Weekly ordinary time earnings	Weekly total earnings	Weekly total earnings	Weekly ordinary time earnings	Weekly total earnings	Weekly total earnings
		\$	\$	\$	\$	\$	\$	\$	\$	\$
ORIGINAL										
<b>1996</b>										
June	17 May	663.40	702.80	621.90	570.10	583.20	389.30	631.90	662.40	503.30
September	16 August	666.90	699.20	624.30	556.30	567.40	387.70	629.10	654.10	506.50
December	15 November	688.50	728.50	643.00	574.20	584.90	393.70	649.90	680.00	517.70
<b>1997</b>										
March	21 February	705.80	742.10	658.80	584.30	594.80	407.80	664.40	691.90	533.10
June	16 May	707.30	744.60	620.00	576.30	586.20	397.00	662.30	690.20	511.40
TREND										
<b>1996</b>										
June	17 May	661.40	698.70	621.90	563.70	575.10	391.20	628.80	657.40	507.10
September	16 August	672.50	709.80	634.00	567.80	579.30	391.10	637.20	665.90	511.70
December	15 November	686.50	723.30	641.00	571.90	582.80	394.40	647.40	675.40	517.40
<b>1997</b>										
March	21 February	700.30	736.50	639.50	576.10	586.20	398.50	657.70	684.90	519.80
June	16 May	713.00	749.00	632.40	579.50	589.40	403.20	667.40	693.80	519.40

<sup>1</sup> For explanation of terms and concepts, refer to *Average Weekly Earnings, States and Australia*, ABS catalogue number 6302.0. (Source: *Average Weekly Earnings, States and Australia*, ABS catalogue number 6302.0.)

# 14

## WEEKLY AWARD RATES OF PAY INDEXES, FULL-TIME ADULT EMPLOYEES<sup>1</sup>: Original (Base: June 1985 = 100.0)

Industry	1994	1996	1997		
	June	June	April	May	June
Mining	137.7	150.9	150.9	150.9	150.9
Manufacturing	146.9	152.4	153.6	154.2	154.5
Electricity, gas and water	133.4	137.7	137.7	137.9	137.9
Construction	142.6	149.3	149.5	150.2	150.2
Wholesale trade	139.9	146.7	148.4	148.4	148.4
Retail trade	139.6	143.7	144.1	144.2	144.2
Transport and storage	138.9	145.7	148.7	148.9	148.9
Communication	135.4	135.4	135.4	135.4	135.4
Finance, property and business services	137.8	140.5	140.6	140.7	140.7
Public administration and defence	148.3	157.9	158.6	158.6	158.6
Community services	140.8	148.4	149.1	149.5	149.5
Recreation, personal and other services	149.2	155.9	158.2	159.2	159.2
<b>Total all industries</b>	<b>141.7</b>	<b>147.9</b>	<b>148.7</b>	<b>149.0</b>	<b>149.1</b>

<sup>1</sup> For explanation of terms and concepts, refer to *Award Rates of Pay Indexes, Australia*, ABS catalogue number 6312.0. (Source: *Award Rates of Pay Indexes, Australia*, ABS catalogue number 6312.0.)

# 15

## SUMMARY OF ANNUAL MOVEMENTS IN WAGES AND PRICES: Original

Period	CPI, All groups Hobart	Price index of materials used in house building, All groups, Hobart <sup>2</sup>	Price index of materials used in building other than house building, All groups, Hobart <sup>2</sup>	Average weekly total, earnings, full-time adult employees	Weekly award rates of pay index, full-time adult employees <sup>1</sup>
PERCENTAGE CHANGE FROM PREVIOUS YEAR					
<b>1994</b>					
June	2.7	3.7	1.1	..	1.7
<b>1996</b>					
June	3.0	0.7	1.0	..	1.3
<b>1996</b>					
July	..	-0.1	1.0	..	0.9
August	..	-0.2	0.9	3.0	0.9
September	2.3	-0.2	0.8	..	0.8
October	..	-0.8	0.4	..	0.9
November	..	-1.0	0.7	4.9	0.7
December	1.8	-0.5	1.0	..	0.7
<b>1997</b>					
January	..	-0.7	0.9	..	0.1
February	..	-0.3	1.1	6.2	0.8
March	1.5	-0.2	1.3	..	0.6
April	..	-0.7	1.4	..	0.9
May	..	0.3	1.3	4.2	0.6
June	0.6	-0.3	1.2	..	0.8
July	..	..	..	..	—
August	..	..	..	n.y.a.	—
September	-0.4	-0.2	0.6	..	—

<sup>1</sup> Discontinued after June 1997.

<sup>2</sup> Quarterly from June 1997.

Sources:

Consumer Price Index, ABS catalogue number 6401.0.

Price Index of Materials Used in House Building, ABS catalogue number 6408.0, (quarterly from June 1997).

Price Index of Materials Used in Other than House Building, ABS catalogue number 6407.0, (quarterly from June 1997).

Average Weekly Earnings, States and Australia, ABS catalogue number 6302.0.

Award Rates of Pay Indexes, Australia, ABS catalogue number 6312.0, (final issue released for June 1997)

# 16

## HOUSE PRICE INDEX NUMBERS<sup>1</sup>, HOBART: Original

(Base of each Index: 1989-90 = 100.0)

	Established house price index		Project home price index	
	Index	% change <sup>2</sup>	Index	% change <sup>2</sup>
1993-94	122.5	5.1	117.7	3.2
1994-95	129.0	5.3	121.3	3.1
1995-96	129.8	0.6	123.4	1.7
<b>1995</b>				
June	130.1	0.5	123.1	1.2
September	129.2	-0.7	123.5	0.3
December	129.1	-0.1	123.5	—
<b>1996</b>				
March	129.8	+0.5	123.3	-0.2
June	131.2	+1.1	123.3	—
September	130.2	-0.8	123.3	—
December	128.5	-1.3	123.3	—
<b>1997</b>				
March	130.4	+1.5	123.3	—
June	124.9	-4.2	123.3	—

<sup>1</sup> Used in calculating the mortgage interest charges component of the Consumer Price Index.

<sup>2</sup> Percentage change over previous period.

(Source: House Price Indexes: Eight Capital Cities, ABS catalogue number 6416.0)

## 17

CONSUMER PRICE INDEX, HOBART AND EIGHT CAPITAL CITIES COMBINED<sup>1, 2</sup>; Original

(Base of each index: year 1989-90 = 100.0)

<i>Hobart</i>						
<i>Period</i>	<i>Food</i>	<i>Clothing</i>	<i>Housing</i>	<i>Household equipment and operation</i>	<i>Transportation</i>	<i>Tobacco and alcohol</i>
<b>1995</b>						
March	115.4	105.0	102.7	114.9	115.1	140.3
June	116.1	106.1	104.5	115.4	117.2	143.1
September	117.3	105.9	106.0	116.5	119.4	144.3
December	117.1	105.6	106.5	117.5	120.1	145.9
<b>1996</b>						
March	118.1	106.3	107.2	117.8	119.0	150.3
June	118.4	106.0	107.6	118.5	119.8	153.3
September	120.0	105.9	107.4	119.1	119.7	153.7
December	120.6	105.6	104.8	119.4	121.8	152.7
<b>1997</b>						
March	120.7	105.7	101.9	120.1	122.8	153.1
June	121.0	105.3	98.4	120.1	121.7	153.5
September	121.0	104.8	97.7	119.7	122.2	153.6

<i>Period</i>	<i>Hobart</i>			<i>Weighted average of eight capital cities</i>		
	<i>Health and personal care</i>	<i>Recreation and education</i>	<i>Index, all groups</i>	<i>% change over previous period, all groups</i>	<i>Index</i>	<i>% change over previous period</i>
<b>1995</b>						
March	140.4	115.4	116.1	+1.7	114.7	+1.7
June	141.0	114.0	117.1	+0.9	116.2	+1.3
September	146.7	113.3	118.4	+1.1	117.6	+1.2
December	146.9	115.8	119.2	+0.7	118.5	+0.8
<b>1996</b>						
March	149.7	117.1	120.1	+0.8	119.0	+0.4
June	150.5	116.0	120.6	+0.4	119.8	+0.7
September	154.1	115.1	121.1	+0.4	120.1	+0.3
December	154.8	116.8	121.3	+0.2	120.3	+0.2
<b>1997</b>						
March	159.4	120.5	121.9	+0.5	120.5	+0.2
June	162.6	119.2	121.3	-0.5	120.2	-0.2
September	153.0	119.2	120.6	-0.6	119.7	-0.4

<sup>1</sup> Further information on construction of CPI indexes is contained in the bulletin *The Australian Consumer Price Index Concepts, Sources and Methods* (Catalogue No. 6461.0).

<sup>2</sup> The CPI is now published on a reference base of 1989-90 = 100.0. (Source: *Consumer Price Index*, ABS catalogue number 6401.0.)



PRICE INDEX OF MATERIALS USED IN BUILDING OTHER THAN HOUSE BUILDING, HOBART: **Original**  
(Base year: 1989-90 = 100.0)

*Index numbers for selected major building materials*

Period	Structural timber	Clay bricks	Ready mixed concrete	Precast concrete products	Steel decking, cladding etc.	Structural steel
<b>1996</b>						
May	114.4	123.7	112.9	128.4	112.3	122.7
June	113.8	124.5	112.1	128.4	112.3	123.7
July	114.5	124.5	114.2	132.6	112.3	125.2
August	112.7	124.5	115.5	132.6	112.3	126.0
September	112.7	124.5	114.7	132.6	112.3	124.7
October	110.6	124.5	115.8	132.6	112.3	124.7
November	110.3	125.6	115.8	132.6	112.2	126.5
December	108.9	125.6	116.3	132.6	112.2	126.7
<b>1997</b>						
January	108.9	125.7	116.3	132.6	112.2	126.7
February	108.9	125.7	116.6	132.6	118.6	126.7
March	109.8	125.7	117.3	131.3	118.6	126.7
April	108.9	125.7	117.3	131.2	118.6	126.7
May	108.9	125.7	117.5	131.2	118.9	126.7
June p	108.9	125.7	117.5	131.2	118.9	126.9
September p	107.5	127.9	114.9	131.2	118.9	126.9

*Index numbers for selected major building materials*

Period	Reinforcing steel bar, fabric and mesh	Aluminium windows	Fabricated steel products	Builders' hardware	Sand & aggregate	Paint & other coatings	Non-ferrous pipes & fittings
<b>1996</b>							
May	109.2	104.4	111.5	116.0	133.1	120.6	174.5
June	109.2	104.4	111.9	116.1	133.1	124.5	174.5
July	109.2	104.4	111.9	115.4	133.1	126.1	168.7
August	110.7	104.4	112.4	118.9	133.1	126.1	167.9
September	110.8	104.4	113.6	119.0	133.1	126.7	167.9
October	110.9	105.5	113.6	119.1	133.1	126.7	160.8
November	110.9	105.5	113.4	119.1	133.1	127.0	160.9
December	110.9	105.5	113.4	118.2	133.1	128.2	162.4
<b>1997</b>							
January	110.9	106.8	113.4	118.2	135.0	127.8	162.4
February	111.0	106.8	113.4	118.0	134.2	127.3	163.1
March	110.9	106.8	113.5	115.1	134.2	127.2	166.9
April	110.9	106.8	113.5	115.1	134.2	127.2	166.9
May	110.9	106.8	113.5	115.2	134.2	124.6	166.9
June p	110.9	106.8	113.5	115.4	121.4	124.7	167.9
September p	110.9	106.8	114.0	115.3	121.4	124.6	168.5

(Source: Price Index of Materials Used in Other than House Building, ABS catalogue number 6407.0.)

continued

PRICE INDEX OF MATERIALS USED IN BUILDING OTHER THAN HOUSE BUILDING, HOBART: **Original**—continued  
(Base year: 1989-90 = 100.0)

Period	All electrical materials		All mechanical services		All plumbing materials	
	Index	% change over previous period	Index	% change over previous period	Index	% change over previous period
<b>1996</b>						
May	119.6	+1.1	116.1	—	127.1	+0.4
June	119.5	-0.1	116.5	+0.3	127.3	+0.2
July	119.5	—	116.3	-0.2	127.0	-0.2
August	113.7	-4.9	117.4	+0.9	126.0	-0.8
September	113.9	+0.2	117.6	+0.2	126.0	—
October	118.3	+3.9	117.3	-0.3	120.4	-4.4
November	118.3	—	116.5	-0.7	120.7	+0.2
December	118.3	—	116.5	—	121.2	+0.4
<b>1997</b>						
January	118.4	+0.1	116.6	+0.1	120.8	-0.3
February	118.4	—	116.6	—	121.0	+0.2
March	117.6	-0.7	117.1	+0.4	122.3	+1.1
April	117.4	-0.2	117.1	—	122.5	+0.2
May	117.6	0.2	117.1	—	122.5	—
June p	117.6	—	117.2	0.1	122.5	—
September p	117.6	—	116.6	-0.5	122.8	+0.2
		All groups excluding electrical materials and mechanical services		All groups		
Period	Index	% change over previous period	Index	% change over previous period		
<b>1996</b>						
May	115.3	+0.1	115.2	+0.1		
June	115.3	—	115.3	+0.1		
July	116.1	+0.7	115.8	+0.4		
August	116.5	+0.3	115.9	+0.1		
September	116.3	-0.2	115.8	-0.1		
October	116.2	-0.1	116.0	+0.2		
November	116.6	+0.3	116.1	+0.1		
December	116.7	+0.1	116.2	+0.1		
<b>1997</b>						
January	116.8	+0.1	116.3	+0.1		
February	117.1	+0.3	116.5	+0.2		
March	117.1	—	116.6	+0.1		
April	117.3	+0.2	116.7	+0.1		
May	117.2	0.1	116.7	—		
June p	117.3	0.1	116.7	—		
September p	117.1	-0.2	116.5	-0.2		

(Source: Price Index of Materials Used in Other than House Building, ABS catalogue number 6407.0.)

# 19

## PRODUCTION OF SELECTED COMMODITIES: Original

Year or month	Dairy products <sup>1</sup>			Staff-hours worked	
	Whole milk <sup>2</sup>	Factory butter <sup>3</sup>	Factory cheese	Textile manufacturing <sup>4</sup>	Vegetable preserving
	million litres	tonnes	tonnes	'000	'000
1994-95	436.5	8 105	20 529	1 527	1 838
1995-96	513.8	9 589	24 852	1 443	1 784
1996-97	529.4	10 869	25 373	1 349	1 534
<b>1994</b>					
June	11.7	227	551	145	164
<b>1996</b>					
June	16.5	706	695	110	143
<b>1997</b>					
April	37.2	1 084	2 098	118	128
May	27.6	893	879	115	138
June	15.9	338	652	110	110
Year or month	Newsprint <sup>5</sup>	Refined zinc	Metal, refin. index <sup>6</sup>	Electricity	Gas
	'000 tonnes	'000 tonnes		million kW.h	'000 MJ
1994-95	222.7	189.8	98.3	8 688	51 933
1995-96	242.9	207.8	104.7	9 100	41 035
1996-97	232.7	207.7	116.1	9 543	11 781
<b>1994</b>					
June	16.8	17.3	97.8	762	5 871
<b>1996</b>					
June	19.6	17.3	110.5	826	3 863
<b>1997</b>					
April	19.0	16.6	109.7	766	—
May	23.7	19.4	119.0	841	—
June	17.6	17.7	117.8	848	—

<sup>1</sup> Source: Australian Dairy Corporation.  
<sup>2</sup> Includes the whole milk equivalent of farm cream intake.  
<sup>3</sup> Includes butter equivalent of butter oil.  
<sup>4</sup> Includes spinning, weaving and carpet making. Reported by establishments which manufacture textiles only, or manufacture clothing and textiles in the one plant.  
<sup>5</sup> Excludes production of directory newsprint and high grade specialty paper.  
<sup>6</sup> Metallurgical refining index (Base: 1979-80 = 100.0) Output from selected establishments covering the smelting and refining of ferro-alloys, zinc and aluminium. The weighting pattern is based on the establishments' value added as derived from the 1979-80 Manufacturing Census. For multi-product establishments, value added was apportioned to products on the basis of gross receipts from each product.  
(Sources: ABS unpublished data.)

## 20

LIVESTOCK SLAUGHTERING: **Original**

Year or month	Cattle			Sheep	Lambs	Pigs
	Bulls, bullocks and steers	Cows and heifers	Calves			
	'000	'000	'000	'000	'000	'000
1994-95	111.2	96.7	28.8	569.3	477.2	92.9
1995-96	95.4	88.9	41.4	349.7	393.3	86.5
1996-97 p	110.1	98.3	43.7	397.9	374.4	79.2
<b>1995</b>						
August	4.8	5.2	13.8	18.0	26.5	7.7
<b>1996</b>						
August p	6.2	4.6	13.4	13.2	21.2	6.3
September p	6.4	5.2	16.8	14.0	25.4	6.3
October p	7.6	6.4	6.1	19.8	25.2	5.9
November p	9.4	8.0	0.6	32.3	27.1	5.7
December p	12.3	8.9	0.2	42.0	28.2	7.0
<b>1997</b>						
January p	12.8	8.1	0.1	47.5	42.8	6.8
February p	10.6	8.8	0.1	47.4	35.6	6.2
March p	10.1	8.1	0.4	43.5	35.0	6.6
April p	10.3	11.0	1.6	47.6	35.2	6.8
May p	9.7	12.7	1.7	37.0	42.7	7.9
June p	7.5	10.7	1.0	32.1	30.7	6.3
July p	8.6	9.9	1.9	31.7	36.7	8.0
August p	7.2	6.8	14.8	23.6	22.9	6.0

(Source: Livestock Products, Australia, ABS catalogue number 7215.0.)

## 21

LIVESTOCK SLAUGHTERING: **Seasonally adjusted and trend**

Month	Seasonally adjusted			Trend		
	Cattle and calves	Sheep and lambs	Pigs	Cattle and calves	Sheep and lambs	Pigs
	'000	'000	'000	'000	'000	'000
<b>1995</b>						
August	18.5	70.1	7.8	19.5	66.6	7.4
<b>1996</b>						
August	19.8	54.9	6.4	20.3	56.5	6.6
September	22.1	57.1	6.8	20.6	56.9	6.4
October	20.2	55.6	6.2	20.9	58.3	6.3
November	20.4	60.5	5.8	21.2	60.9	6.3
December	22.8	62.7	6.2	21.7	64.2	6.5
<b>1997</b>						
January	21.6	71.3	7.1	22.2	67.1	6.6
February	22.8	71.6	7.0	22.6	68.9	6.8
March	22.2	64.8	6.7	22.9	69.3	6.9
April	25.1	75.7	7.0	23.2	69.5	6.9
May	23.4	68.0	7.0	23.5	70.3	6.9
June	22.0	61.4	6.2	23.9	71.9	6.8
July	24.4	78.6	7.3	24.2	74.0	6.8
August	25.8	83.3	6.5	24.6	76.5	6.7

(Source: ABS unpublished data)

## 22

MEAT PRODUCTION<sup>1</sup>: Original

Year or month	Beef tonnes	Veal tonnes	Mutton tonnes	Lamb tonnes	Pigmeat <sup>2</sup> tonnes	Total tonnes
1994-95	49 907	977	11 230	8 412	5 982	76 509
1995-96	45 377	875	7 414	7 407	5 634	66 707
1996-97 p	52 485	920	8 464	7 043	5 171	74 083
<b>1995</b>						
August	2 386	279	372	498	501	4 035
<b>1996</b>						
August p	2 638	272	270	398	411	3 990
September p	2 878	339	286	478	410	4 392
October p	3 434	125	409	474	386	4 827
November p	4 262	15	700	510	368	5 855
December p	5 559	7	928	528	456	7 479
<b>1997</b>						
January p	5 434	5	1 020	806	456	7 721
February p	4 976	6	1 019	670	413	7 083
March p	4 635	13	927	658	431	6 664
April p	5 394	38	1 014	663	445	7 553
May p	5 524	40	774	804	516	7 659
June p	4 479	22	669	578	409	6 157
July p	4 530	43	664	691	457	6 385
August p	3 614	303	477	429	382	5 204

<sup>1</sup> Carcass weight.

<sup>2</sup> Includes pork used for production of bacon and ham.

(Source: *Livestock Products, Australia*, ABS catalogue number 7215.0.)

## 23

## PRINCIPAL MINERAL CONCENTRATES PRODUCED: Original

Year or quarter	Copper	Iron (pellets)	Lead	Lead- zinc	Tin	Zinc
Year or quarter	'000 tonnes	'000 tonnes	'000 tonnes	'000 tonnes	'000 tonnes	'000 tonnes
1994-95	59.4	1 483.8	97.4	45.3	14.3	350.6
1995-96	53.5	1 681.3	106.3	38.6	16.0	361.5
1996-97	99.7	809.4	101.4	38.0	16.3	356.9
<b>1996</b>						
March	19.8	326.9	24.1	11.4	3.5	84.8
June	21.5	475.4	24.1	9.2	4.3	85.0
September	26.0	439.3	30.6	10.3	3.9	88.6
December	25.6	366.7	24.9	11.0	4.0	89.5
<b>1997</b>						
March	24.0	3.3	22.9	10.2	3.9	85.6
June	24.2	—	23.0	6.4	4.6	93.3

(Source: Tasmania—Development and Resources)

## 24

SAWMILLS AND PLYWOOD MILLS, LOGS DELIVERED AND TIMBER PRODUCED: **Original**

Year or quarter	Tasmanian-grown logs delivered					Sawn, peeled and sliced timber produced <sup>1</sup>				
	Eucalypts	Hardwoods, excluding eucalypts <sup>2</sup>	Plantation <sup>3</sup> softwoods	Native softwoods <sup>4</sup>	Total	Eucalypts	Hardwoods, excluding eucalypts <sup>2</sup>	Plantation <sup>3</sup> softwoods	Native softwoods <sup>4</sup>	Total
1994-95	653.1	12.6	304.9	2.8	973.4	212.5	4.3	142.7	0.6	360.1
1995-96	602.8	13.0	343.7	1.4	960.9	192.4	4.4	152.0	0.5	349.3
1996-97 p	496.7	16.1	357.2	1.2	871.3	165.9	4.0	160.3	0.5	330.7
<b>1995</b>										
June	187.6	2.1	77.4	0.7	267.8	53.4	1.1	34.6	0.1	89.2
September	184.3	1.8	79.9	0.2	266.2	55.4	1.3	36.0	0.1	92.8
December	139.1	1.5	70.2	0.2	211.0	49.0	1.0	36.0	0.2	86.2
<b>1996</b>										
March	136.6	6.7	98.1	0.3	241.7	41.5	0.9	41.2	0.1	83.7
June	142.9	3.0	95.5	0.6	242.0	46.5	1.2	38.8	0.1	86.6
September	134.4	2.4	97.3	—	234.1	47.3	1.1	43.0	0.1	91.4
December	111.8	3.7	83.3	0.5	199.3	40.1	0.9	41.2	0.1	82.3
<b>1997</b>										
March	107.9	6.3	86.1	0.4	200.6	34.0	0.9	37.1	—	72.1
June	142.7	3.7	90.6	0.3	237.2	44.5	1.1	39.0	0.2	84.9

<sup>1</sup> Includes plywood, veneer and sliced timber production converted to an equivalent cubic measurement.

<sup>2</sup> Includes blackwood, myrtle, sassafras etc.

<sup>3</sup> Radiata pine.

<sup>4</sup> Includes Huon pine, celery top pine and King William pine.

(Source: ABS unpublished data.)

## 25

CHIPPING AND GRINDING OF WOOD<sup>1</sup>: **Original**

Year or quarter	Materials used <sup>3</sup>			
	Producing locations <sup>2</sup>	Logs delivered <sup>4</sup>	Sawmill offcuts	Chipped and ground wood production
1994-95	31	4 064.1	394.2	4 343.1
1995-96	31	3 510.0	457.9	3 820.1
1996-97	27	3 207.4	433.2	3 609.3
<b>1995</b>				
June	31	967.9	120.1	1 059.3
September	32	935.6	118.2	1 044.1
December	31	932.1	104.6	939.9
<b>1996</b>				
March	32	842.6	109.8	958.0
June	31	799.6	125.3	878.1
September	30	767.5	133.5	870.9
December	30	805.1	117.5	908.4
<b>1997</b>				
March	28	759.7	87.0	829.2
June	27	875.1	95.2	1 000.9

<sup>1</sup> Both hardwoods and softwoods, separate details are not available.

<sup>2</sup> Capable of producing at end of year or actually producing during quarter.

<sup>3</sup> Data reported by weight, converted to cubic measure by the factor 0.95 m<sup>3</sup> per tonne.

<sup>4</sup> Includes log equivalent of limbwood and billets.

(Source: ABS unpublished data.)

## 26

LOGS DELIVERED FOR MILLING OR CHIPPING: **Original**

Year or quarter	Sawmilling and plywood milling			Chipping and grinding <sup>1</sup>			Total		
	Crown land <sup>2</sup>	Private land	Total	Crown land <sup>2</sup>	Private land	Total	Crown land <sup>2</sup>	Private land	Total
	'000 m <sup>3</sup>	'000 m <sup>3</sup>	'000 m <sup>3</sup>	'000 m <sup>3</sup>	'000 m <sup>3</sup>	'000 m <sup>3</sup>	'000 m <sup>3</sup>	'000 m <sup>3</sup>	'000 m <sup>3</sup>
1994-95	780.3	193.2	973.4	1 966.8	2 097.3	4 064.1	2 747.1	2 290.4	5 037.6
1995-96	773.5	187.4	960.9	1 579.6	1 930.4	3 510.0	2 353.1	2 117.8	4 470.9
1996-97	725.0	146.3	871.3	1 627.4	1 580.0	3 207.4	2 352.4	1 726.2	4 078.7
<b>1995</b>									
June	215.2	52.7	267.8	537.6	430.3	967.9	752.8	483.0	1 235.8
September	214.1	52.2	266.2	438.2	497.4	935.6	652.2	549.6	1 201.9
December	165.2	45.8	211.0	388.3	543.8	932.1	553.5	589.6	1 143.1
<b>1996</b>									
March	202.3	39.4	241.7	405.3	437.3	842.6	607.6	476.7	1 084.3
June	191.9	50.1	242.0	347.9	451.8	799.6	539.7	501.8	1 041.6
September	194.2	39.9	234.1	403.5	364.0	767.5	597.8	403.9	1 001.7
December	162.5	36.8	199.3	411.0	394.1	805.1	573.4	430.9	1 004.3
<b>1997</b>									
March	170.1	30.5	200.6	375.7	383.9	759.7	545.8	414.5	960.3
June	198.2	39.0	237.2	437.2	437.9	875.1	635.4	476.9	1 112.3

<sup>1</sup> Logs used are generally below sawmilling standard; includes log equivalent of limbwood and billets.

<sup>2</sup> Comprises all areas (including concession areas) from which royalties are payable to Forestry Tasmania. (Source: ABS unpublished data.)

# 27

## BUILDING APPROVALS: Original

Year or month	New residential building			Value					
	Houses	Other <sup>1</sup>	Con-versions etc.	Total dwelling units	New dwelling units	Alterations and additions <sup>2</sup> to residential building	Non-residential building <sup>3</sup>		Total of all building
							Private	Total	
no.	no.	no.	no.	\$'000	\$'000	\$'000	\$'000	\$'000	
1994-95	2 576	596	14	3 176	244 623	39 963	117 984	161 567	446 152
1995-96	1 938	601	7	2 546	217 445	36 890	119 849	216 752	471 086
1996-97	1 593	251	17	1 861	157 428	35 323	121 490	158 970	351 720
<b>1994</b>									
August	257	34	2	293	23 162	3 454	11 251	12 028	38 643
<b>1996</b>									
August	158	18	1	177	15 048	3 040	7 007	17 482	35 569
<b>1997</b>									
May	121	25	1	147	12 768	2 723	16 913	18 091	33 582
June	104	13	1	118	9 464	2 523	13 294	13 619	25 606
July	109	56	—	165	14 289	3 695	5 761	7 807	25 790
August	121	14	1	136	10 987	3 481	4 944	6 444	20 913

<sup>1</sup> New individual dwelling units (e.g. flats, home units and v&a units).

<sup>2</sup> Valued at \$10,000 and over.

<sup>3</sup> Comprises non-residential building (new plus alterations and additions) valued at \$50,000 and over.  
(Source: *Building Approvals, Tasmania*, ABS catalogue number 8731.6.)

# 28

## SECURED HOUSING COMMITMENTS<sup>1</sup>: Original, seasonally adjusted and trend

Month	Total number of dwellings <sup>2</sup>			Total value of commitments		
	Original	Seasonally adjusted	Trend	Original	Seasonally adjusted	Trend
	no.	no.	no.	\$'000	\$'000	\$'000
<b>1996</b>						
June	841	830	872	58.3	61.0	64.0
July	1 032	1 012	1 069	66.1	64.7	68.0
August	1 163	1 175	1 088	77.2	79.6	71.2
September	1 067	1 098	1 081	68.8	70.4	72.0
October	1 117	1 155	1 040	75.9	80.8	70.0
November	909	924	972	60.7	61.5	65.8
December	787	845	900	54.4	57.6	61.1
<b>1997</b>						
January	742	810	846	49.5	51.6	57.6
February	778	793	r 817	56.1	56.9	r 55.9
March	814	799	r 811	59.2	57.9	r 56.0
April	933	881	r 814	64.0	59.4	r 56.9
May	943	873	r 811	63.6	58.1	r 57.7
June	756	718	r 802	54.6	55.3	r 58.1
July	786	767	r 792	57.7	57.1	r 58.5
August	801	814	785	60.7	61.7	58.7

<sup>1</sup> Commitment is a firm offer of housing finance. It either has been, or is normally expected to be, accepted. Includes commitments to provide

housing finance to employees and commitments accepted and cancelled in the same month. Excludes alterations and additions. Includes refinancing.

<sup>2</sup> Includes new dwellings, established dwellings and refinancing. Excludes alterations and additions.

(Source: *Housing Finance for Owner Occupation, Australia*, ABS catalogue 5609.0.)



## 29

BANKING STATISTICS<sup>1</sup>: Original

Month	Deposits				
	Current bearing interest	Current – not bearing interest	Fixed	Investment savings accounts	Statement savings accounts
	\$m	\$m	\$m	\$m	\$m
<b>1996</b>					
August	692	249	1 758	543	163
September	690	240	1 768	552	165
October	699	238	1 787	559	168
November	692	237	1 791	560	169
December	699	244	1 771	570	188
<b>1997</b>					
January	662	246	1 763	583	235
February	695	241	1 764	605	229
March	692	252	1 780	606	231
April	687	250	1 791	600	231
May	695	249	1 760	600	230
June	685	249	1 750	600	219
July	710	242	1 750	602	220
August	712	239	1 751	608	227

Month	Deposits				Loans <sup>2</sup>
	Passbook/School savings accounts	Other	Total		
	\$m	\$m	\$m	\$m	
<b>1996</b>					
August	153	127	3 685	4 541	
September	151	129	3 694	4 520	
October	147	129	3 728	4 545	
November	140	132	3 722	4 513	
December	134	133	3 739	4 533	
<b>1997</b>					
January	127	129	3 745	4 466	
February	123	103	3 759	4 493	
March	122	103	3 786	4 694	
April	121	102	3 781	4 412	
May	119	101	3 754	4 423	
June	117	100	3 719	4 500	
July	114	94	3 733	4 559	
August	114	98	3 748	4 590	

<sup>1</sup> Details are the averages of weekly figures for each month. The figures are derived from returns submitted by banks authorised under the *Banking Act* together with similar returns voluntarily submitted by the State banks; they exclude the Reserve Bank.

<sup>2</sup> Excludes non-resident loans.  
(Source: Reserve Bank of Australia.)

## 30

PRIVATE NEW CAPITAL EXPENDITURE BY TYPE OF ASSET<sup>1, 2</sup>: Original

Year or quarter	New buildings and structures	Equipment, plant, and machinery	Total
	\$m	\$m	\$m
1994–95	143	546	689
1995–96	190	423	613
1996–97	129	559	688
<b>1996</b>			
September	34	118	151
December	35	157	192
<b>1997</b>			
March	30	140	169
June	31	144	175

<sup>1</sup> Estimates based on a sample survey and therefore subject to sampling variability. Covers selected industries only—mining, manufacturing, finance, property and other selected industries.

<sup>2</sup> Data revised back to June quarter 1987. See *Improvements to ABS Economic Statistics* (catalogue number 1357.0).

(Source: *State Estimates of Private New Capital Expenditure*, ABS catalogue number 5646.0.)

## 31

PASSENGER ARRIVALS AND DEPARTURES, TASMANIA<sup>1</sup>: Original

Period	By air				Total departures <sup>2</sup>	Cruise ships	
	Interstate arrivals	International arrivals	By sea	Total		Arrivals	Departures
1993	694 244	5 144	115 381	814 769	814 835	2 033	2 033
1994	745 508	4 166	128 644	878 318	880 936	6 592	6 592
1995	811 784	3 982	116 869	932 635	931 278	6 199	6 199
1996	831 040	2 999	115 486	949 525	961 468	5 286	5 286
<b>1996</b>							
August	56 695	—	7 952	64 647	66 400	—	—
<b>1997</b>							
January	76 390	399	14 296	91 085	111 118	2 250	2 250
February	69 018	383	11 718	81 119	76 323	2 350	2 350
March	72 393	441	12 952	85 786	92 811	—	—
April	66 932	331	11 820	79 083	86 079	—	—
May	55 569	—	8 680	64 249	76 312	—	—
June	58 491	—	10 223	68 714	67 235	—	—
July	53 633	—	6 512	60 145	67 778	—	—
August	57 543	—	10 346	67 889	70 256	—	—

<sup>1</sup> The following persons are not included in these statistics: passengers under three years of age accompanied by an adult; passengers travelling on chartered flights with minor carriers; passengers travelling on private or VIP flights; and passengers from or departing for overseas other than direct flights to New Zealand.

(Source: Tourism Tasmania.)

## 32

## TOTAL PASSENGER ARRIVALS BY AIR AND SEA, TASMANIA: Original, seasonally adjusted and trend

Period	Original	Seasonally adjusted <sup>1</sup>	Trend
<b>1996</b>			
August	64 647	82 034	80 604
<b>1997</b>			
January	91 085	74 711	76 126
February	81 119	76 488	76 431
March	85 786	72 875	77 281
April	79 083	84 263	78 399
May	64 249	80 288	79 487
June	68 714	80 569	80 342
July	60 145	74 822	81 075
August	67 889	86 108	81 705

<sup>1</sup> There is an annual recalculation of seasonal adjustment factors to include the most recent year's arrivals. This occurs at the end of each financial year and may cause revisions to previously published seasonally adjusted and trend figures. A full time series of seasonally adjusted and trend series from January 1971 is available on request, telephone (03) 6222 5912.

(Source: Tourism Tasmania. ABS unpublished data.)

HOTELS, MOTELS, ETC. WITH FACILITIES						
Period	Original		Room nights		Original	
	Establishments <sup>1</sup> no.	Guest rooms <sup>1</sup> no.	Seasonally adjusted <sup>2</sup> no.	Trend estimates <sup>2</sup> no.	Room occupancy rate %	Takings from accommodation \$'000
<b>June quarter</b>						
1995	179	5 408	n.a.	n.a.	48.4	17 954
1996	180	5 523			46.7	17 815
1997	197	5 637			43.7	17 695
<b>1995</b>						
April	n.a.	n.a.	84 018	88 003	55.6	7 028
May	n.a.	n.a.	86 906	88 739	48.0	6 056
June	179	5 408	91 664	89 500	41.6	4 870
<b>1996</b>						
April	n.a.	n.a.	86 691	87 063	56.2	7 353
May	n.a.	n.a.	84 991	86 355	45.7	5 766
June	180	5 523	85 860	86 166	38.2	4 696
<b>1997</b>						
April	n.a.	n.a.	83 410	83 489	54.1	7 349
May	n.a.	n.a.	80 582	82 647	41.6	5 630
June	197	5 637	82 246	82 067	35.7	4 715
HOLIDAY UNITS						
Period	Original		Unit nights		Original	
	Establishments <sup>1</sup> no.	Units <sup>1</sup> no.	Seasonally adjusted <sup>2</sup> no.	Trend estimates <sup>2</sup> no.	Unit occupancy rate %	Takings from accommodation \$'000
<b>June quarter</b>						
1995	54	830	n.a.	n.a.	43.6	2 343
1996	55	846			43.3	2 374
1997	58	876			43.3	2 545
<b>1995</b>						
April	n.a.	n.a.	12 770	12 413	55.9	1 050
May	n.a.	n.a.	11 987	12 370	38.7	685
June	54	830	12 190	12 301	36.2	608
<b>1996</b>						
April	n.a.	n.a.	13 376	12 387	57.6	1 090
May	n.a.	n.a.	11 831	12 272	37.4	674
June	55	846	12 114	12 210	35.2	611
<b>1997</b>						
April	n.a.	n.a.	14 017	13 008	58.4	1 182
May	n.a.	n.a.	12 897	12 785	39.4	754
June	58	876	11 552	12 551	32.3	609
CARAVAN PARKS						
Period	Original		Site nights		Original	
	Establishments <sup>1</sup> no.	Sites and cabins <sup>1</sup> no.	Seasonally adjusted <sup>2</sup> no.	Trend estimates <sup>2</sup> no.	Site occupancy rate %	Takings from accommodation \$'000
<b>June quarter</b>						
1995	75	6 625	n.a.	n.a.	30.3	1 523
1996	73	6 479			30.5	1 575
1997	73	6 490			31.5	1 720
<b>1995</b>						
April	n.a.	n.a.	67 614	65 527	35.0	700
May	n.a.	n.a.	65 930	65 497	28.4	438
June	75	6 625	64 876	65 293	27.7	385
<b>1996</b>						
April	n.a.	n.a.	63 922	66 093	33.9	712
May	n.a.	n.a.	64 597	66 164	29.4	467
June	73	6 479	67 213	66 383	28.3	395
<b>1997</b>						
April	n.a.	n.a.	71 946	69 434	35.0	753
May	n.a.	n.a.	69 297	69 712	30.5	524
June	73	6 490	67 804	69 835	29.2	442

<sup>1</sup> At end of quarter.<sup>2</sup> Seasonally adjusted and trend estimates are revised annually because of yearly seasonal re-analysis.(Source: *Tourist Accommodation, Tasmania*, ABS catalogue number 8635.6.)

## 34

REGISTRATIONS OF NEW MOTOR VEHICLES<sup>1</sup>: Original

Year or month	Passenger vehicles	Other vehicles <sup>2</sup>	Total (excl. motor cycles)	Vehicles registered by vehicle rental businesses <sup>3</sup>	Motor cycles
	no.	no.	no.	no.	no.
1994	10 543	2 837	13 380	1 708	376
1995	10 919	2 874	13 793	1 952	393
1996	11 445	2 726	14 171	2 384	462
<b>1995</b>					
August	1 061	208	1 269	245	28
<b>1996</b>					
August	1 040	296	1 336	216	52
September	1 171	177	1 348	448	38
October	1 042	265	1 307	213	35
November	1 072	195	1 267	370	50
December	1 491	246	1 737	823	48
<b>1997</b>					
January	756	179	935	4	49
February	746	152	898	3	34
March	738	220	958	3	39
April	815	232	1 047	1	46
May	941	270	1 211	6	36
June	861	267	1 128	22	28
July	1 217	259	1 476	366	46
August	1 094	220	1 314	270	44

<sup>1</sup> Includes State and Commonwealth Government-owned motor vehicles other than those belonging to the defence services. Excludes tractors, plant and equipment, caravans and trailers.

<sup>2</sup> Comprises utilities, panel vans, rigid and articulated trucks and other truck-type vehicles (i.e. motor vehicles designed for purposes other than freight carrying, e.g. campervans, tow trucks, ambulances and hearses) and buses.

<sup>3</sup> These figures are included in previous columns.

(Source: *Motor Vehicle Registrations Australia*, ABS catalogue number 9301.0. ABS unpublished data.)

## 35

TURNOVER OF RETAIL ESTABLISHMENTS AT CURRENT PRICES<sup>1, 2</sup>: Original and trend

Period	Original \$m	Trend estimates	
		\$m	Change from corresponding month of previous year %
<b>1995</b>			
August	244.0	251.3	3.0
<b>1996</b>			
August	246.8	253.7	1.0
September	231.4	254.1	0.9
October	258.4	255.1	0.9
November	268.1	256.4	1.1
December	337.5	257.6	1.2
<b>1997</b>			
January	256.6	258.3	1.1
February	233.8	258.8	1.0
March	252.1	259.5	1.1
April	254.6	260.6	1.7
May	263.7	262.1	2.5
June	244.1	263.7	3.5
July	259.4	265.3	4.5
August	255.3	266.6	5.1

<sup>1</sup> Survey has been re-designed—see Information Paper (8511.0).

<sup>2</sup> Data revised back to 1982. See *Improvements to ABS Economic Statistics* (Catalogue number 1357.0).

(Source: *Retail Trade, Australia*, ABS catalogue number 8501.0.)

	NSW	Vic.	Qld	SA	WA	Tas.	Aust. <sup>1</sup>
<b>Population</b>							
Estimated resident population, March 1997 ('000) p	6 260.9	4 595.7	3 392.9	1 478.7	1 791.2	<b>473.8</b>	18 492.0
Proportion of Australian population, March 1997 (%) p	33.9	24.9	18.3	8.0	9.7	<b>2.6</b>	100.0
Population growth rate, 12 months to March 1997 (%) p	1.2	1.0	2.1	0.4	1.9	<b>-0.1</b>	1.3
<b>Labour Force</b>							
Employment growth, 12 months to September 1997 (trend series) (%)							
Males	-0.4	-0.5	1.0	2.1	3.1	<b>-3.0</b>	0.4
Females	-0.1	1.1	3.6	-1.6	1.1	<b>-6.3</b>	0.7
Persons	-0.3	0.2	2.1	0.5	2.2	<b>-4.3</b>	0.5
Unemployment rate (trend series), September 1997 (%)	8.0	9.1	9.4	9.8	7.1	<b>11.3</b>	8.6
Unemployment growth, 12 months to September 1997 (trend series) (%)	0.5	0.6	0.9	3.3	-6.8	<b>3.0</b>	0.0
Participation rate (trend series), September 1997 (%)	61.3	63.1	64.6	61.8	66.0	<b>58.4</b>	63.0
Average weekly overtime worked per employee, August 1997 (hours)	1.0	1.2	0.9	1.0	1.1	<b>0.7</b>	1.0
Job vacancy rate, August 1997 (%)	0.9	1.0	1.4	0.9	1.0	<b>1.4</b>	1.0
Working days lost through industrial disputes, 12 months to July 1997 (days per '000 employees)	56	82	117	23	93	<b>75</b>	74
<b>Wages and Prices</b>							
Average weekly total earnings, full-time adult employees (trend series) May 1997 (\$)							
Males	822.9	792.2	752.6	750.9	815.3	<b>749.0</b>	795.7
Females	657.7	634.4	607.0	598.0	598.2	<b>589.4</b>	633.3
Persons	760.2	736.4	699.9	698.9	738.2	<b>693.8</b>	736.6
Average weekly total earnings, full-time adult employees, growth rate, 12 months to May 1997 (%)	1.1	4.1	6.7	4.1	1.4	<b>5.5</b>	3.2
Consumer price index, all groups, annual growth to September quarter 1997 (%) <sup>2</sup>	-0.3	-0.1	0.1	-0.8	-0.7	<b>-0.4</b>	-0.3
<b>Building</b>							
% change in the number of new residential dwelling units approved in 12 months ended August 1997, over the same period previous year	12.6	18.6	7.7	6.2	2.6	<b>-23.1</b>	10.0
<b>Finance and Retail Trade</b>							
% change in private new capital expenditure, 12 months ended June 1997, over the same period previous year	8.3	11.3	29.5	37.6	-16.9	<b>12.2</b>	8.0
% change in trend estimates turnover of retail establishments, August 1997 (change from corresponding month of the previous year)	2.4	7.1	4.9	3.0	4.3	<b>5.1</b>	4.3
<b>Transport</b>							
% change in number of new motor vehicles (excluding motorcycles) registered 12 months ended August 1997, over the same period previous year	4.7	8.8	3.7	2.1	7.8	<b>8.7</b>	5.5
<b>Agriculture</b>							
% change in the number of livestock slaughtered 12 months ended August 1997 over the same period previous year							
Cattle and calves	6.7	10.2	9.9	3.8	5.9	<b>16.1</b>	8.4
Sheep and lambs	-1.3	8.6	19.3	6.3	5.6	<b>9.4</b>	4.6
<b>Tourism</b>							
Room occupancy rates for hotels, motels etc. with facilities, June quarter 1997(%)	56.0	53.3	56.4	51.1	53.8	<b>43.7</b>	54.6
<b>Australian National and State Accounts</b>							
% change in GSP (GDP), Average 1989-90 Prices Trend Series							
Mar. qtr 1997 to Jun. qtr 1997	0.3	1.3	0.9	-0.5	—	<b>-0.8</b>	0.6
Jun. qtr 1996 to Jun. qtr 1997	2.1	3.2	4.3	-0.2	1.4	<b>-1.4</b>	2.6

<sup>1</sup> Australian totals include the ACT and NT.<sup>2</sup> CPI applies to State capitals.

## EXPLANATORY NOTES

### INTRODUCTION

**1** This publication contains latest figures for a comprehensive range of economic indicators. Statistics shown in this publication are the latest available at the date of preparation and may be subject to revision in subsequent issues. In a number of cases figures appearing in this publication are preliminary and are subject to revision in subsequent issues. Reference should therefore always be made to the latest issue or to the statistical publication on the specific subject.

### SEASONAL ADJUSTMENT AND TREND ESTIMATION

**2** Seasonal adjustment is a means of removing the estimated effects of normal seasonal variation from the series so that the effects of other influences on the series can be more clearly recognised. Seasonal adjustment does not aim to remove the irregular or non-seasonal influences which may be present in any particular month. This means that month-to-month movements of the seasonally adjusted estimates may not be reliable indicators of trend behaviour.

**3** The smoothing of seasonally adjusted series reduces the impact of the irregular components of the seasonally adjusted series and creates trend estimates. These trend estimates are derived by applying a 13-term Henderson-weighted moving average to all months except the last six. The last six monthly trend estimates are obtained by applying surrogates of the Henderson average to the seasonally adjusted series. Trend series are used to analyse the underlying behaviour of the series over time.

**4** While this smoothing technique enables estimates to be produced for the latest month, it does result in revisions to the most recent months as additional observations become available. Generally, subsequent revisions become smaller and after 3 months have a negligible impact on the series. Revisions also occur as a result of the annual review of seasonal factors.

**5** Users may wish to refer to the ABS Publication *A Guide to Interpreting Time Series – Monitoring ‘Trends’ – An Overview* (1348.0) for more detailed information on smoothing seasonally adjusted time series data.

### RELATED PUBLICATIONS

**6** Current publications produced by the ABS are listed in the *Catalogue of Publications and Products* (1101.0). The ABS also issues, on Tuesdays and Fridays, the *Release Advice* (1105.0) which lists publications to be released in the next few days. The *Catalogue* and *Release Advice* are available from any ABS office.

### UNPUBLISHED STATISTICS

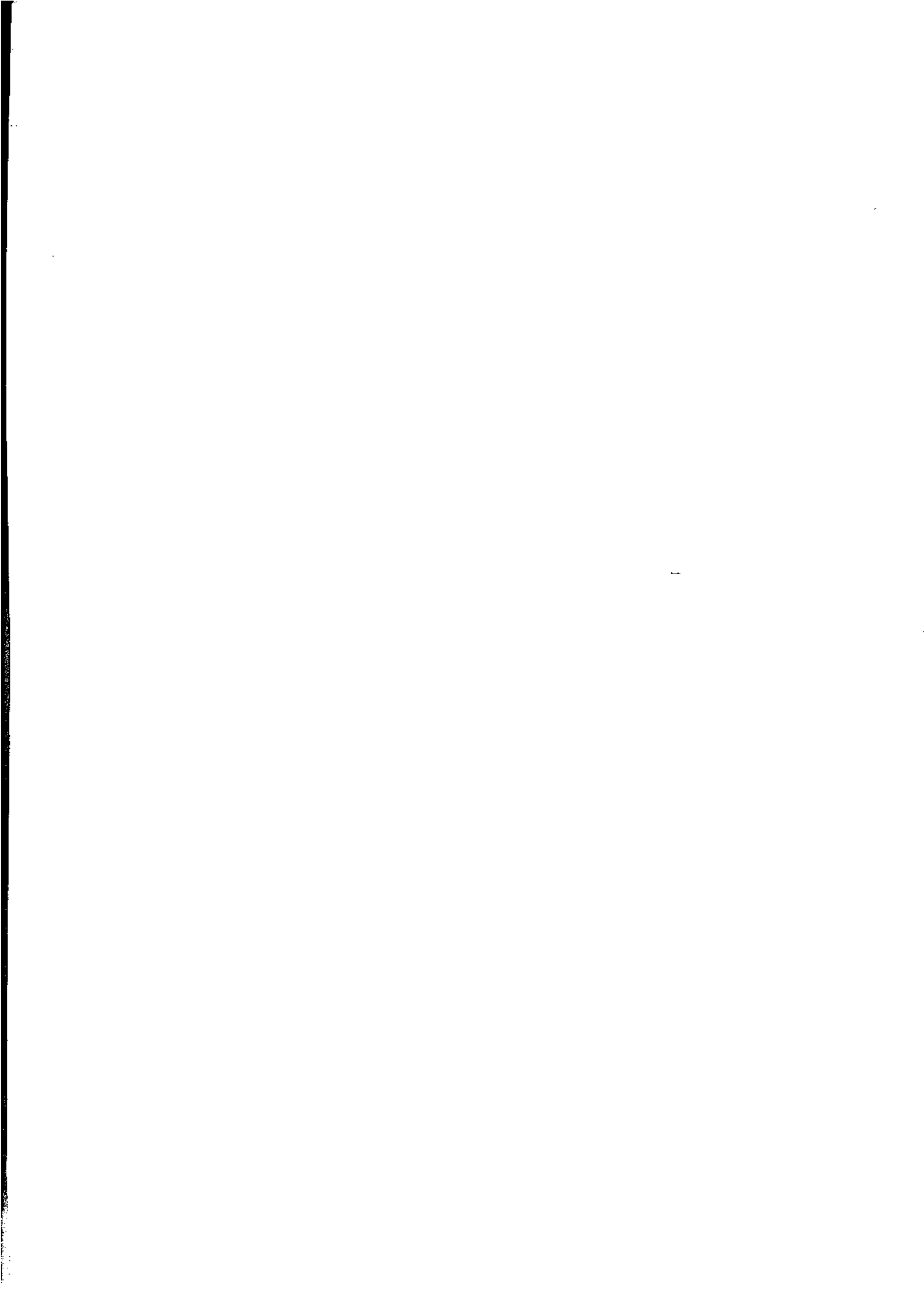
**7** As well as the statistics included in this and related publications, the ABS may have other relevant unpublished data available. Inquiries should be made to Information Inquiries on (03) 6222 5800 or to any ABS office.

### EFFECTS OF ROUNDING

**8** Some figures have been rounded and discrepancies may occur between totals and sums of the component items.

### SYMBOLS AND OTHER USAGES

n.a.	not available
n.y.a.	not yet available
..	not applicable
—	nil or rounded to zero
p	preliminary—figure or series subject to revision
r	figure or series revised since previous issue



## For more information . . .

The ABS publishes a wide range of statistics and other information on Australia's economic and social conditions. Details of what is available in various publications and other products can be found in the ABS Catalogue of Publications and Products available from all ABS Offices.

### ABS Products and Services

Many standard products are available from ABS bookshops located in each State and Territory. In addition to these products, information tailored to the needs of clients can be obtained on a wide range of media by contacting your nearest ABS Office. The ABS also provides a Subscription Service for standard products and some tailored information services.

### National Dial-a-Statistic Line

0055 86 400

*Steadycom P/L: premium rate 25c/20 secs.*

This number gives 24-hour access, 365 days a year, for a range of important economic statistics including the CPI.

### Internet

<http://www.abs.gov.au>

A wide range of ABS information is available via the Internet, with basic statistics available for each State, Territory and Australia. We also have Key National Indicators, ABS product release details and other information of general interest.

### Sales and Inquiries

[client.services@abs.gov.au](mailto:client.services@abs.gov.au)

National Mail Order Service (02) 6252 5249  
Subscription Service 1300 366 323

	Information Inquiries	Bookshop Sales
CANBERRA	(02) 6252 6627	(02) 6207 0326
SYDNEY	(02) 9268 4611	(02) 9268 4620
MELBOURNE	(03) 9615 7755	(03) 9615 7755
BRISBANE	(07) 3222 6351	(07) 3222 6350
PERTH	(08) 9360 5140	(08) 9360 5307
ADELAIDE	(08) 8237 7100	(08) 8237 7582
HOBART	(03) 6222 5800	(03) 6222 5800
DARWIN	(08) 8943 2111	(08) 8943 2111



Client Services, ABS, PO Box 10, Belconnen ACT 2616

